

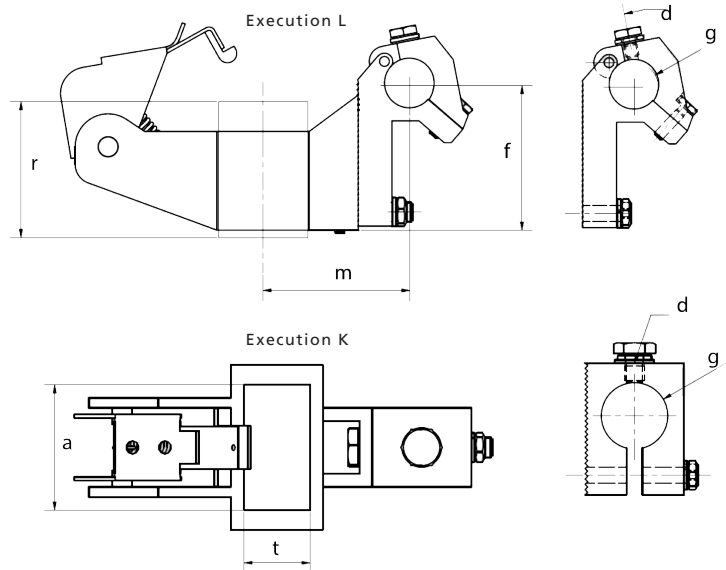
# GH brush holders with clamps



Holders made of homogeneous cast brass. Designed for at least 15 A/cm<sup>2</sup> and compliant with all electro-graphite grades. Clamp alternatives for various motor types embrace a very broad application spectrum.

Standard items are delivered with clamp assembly as shown in execution K.

NOTE. Clamp assembly as shown in execution L must be ordered separately.



## Article list

t x a	g	m	f	d	r
5 x 10	10	20.5	13	M5	20
6.3 x 10	10	21.2	13	M5	20
8.0 x 10	10	22	13	M5	20
6.3 x 12.5	10	21.2	13	M5	25
8.0 x 12.5	10	22	13	M5	25
10 x 12.5	10	23	13	M5	25
8.0 x 16	10–13	22–27	13–30	M5/M6	32
10 x 16	10–13	23–28	13–30	M5/M6	32
12.5 x 16	10–13	24.3–29.3	13–30	M5/M6	32
8.0 x 20	10–16	26	18–25	M5/M6	32
10 x 20	10–16	27	18–25	M5/M6	32
12.5 x 20	10–16	28.3	18–25	M5/M6	32
16 x 20	10–16	30	18–30	M5/M6	32
8.0 x 20	13–16	26	18	M5	32
10 x 20	13–16	27	18	M5	32
12.5 x 20	13–16	28.3	18	M5	32
16 x 32	13–20	33–37	18–50	M6	40
20 x 32	20	35–39	24–50	M6	40
25 x 32	20–25	35	60	M6	50

Order item

## How to contact BEVI

Contact details for all countries are continually updated on our website.  
Please visit [www.bevi.com](http://www.bevi.com) to access the information direct.

BEVI AB (Headquarters)  
Blomstermåla, Sweden  
Tel. +46 499 271 00  
[info@bevi.se](mailto:info@bevi.se)